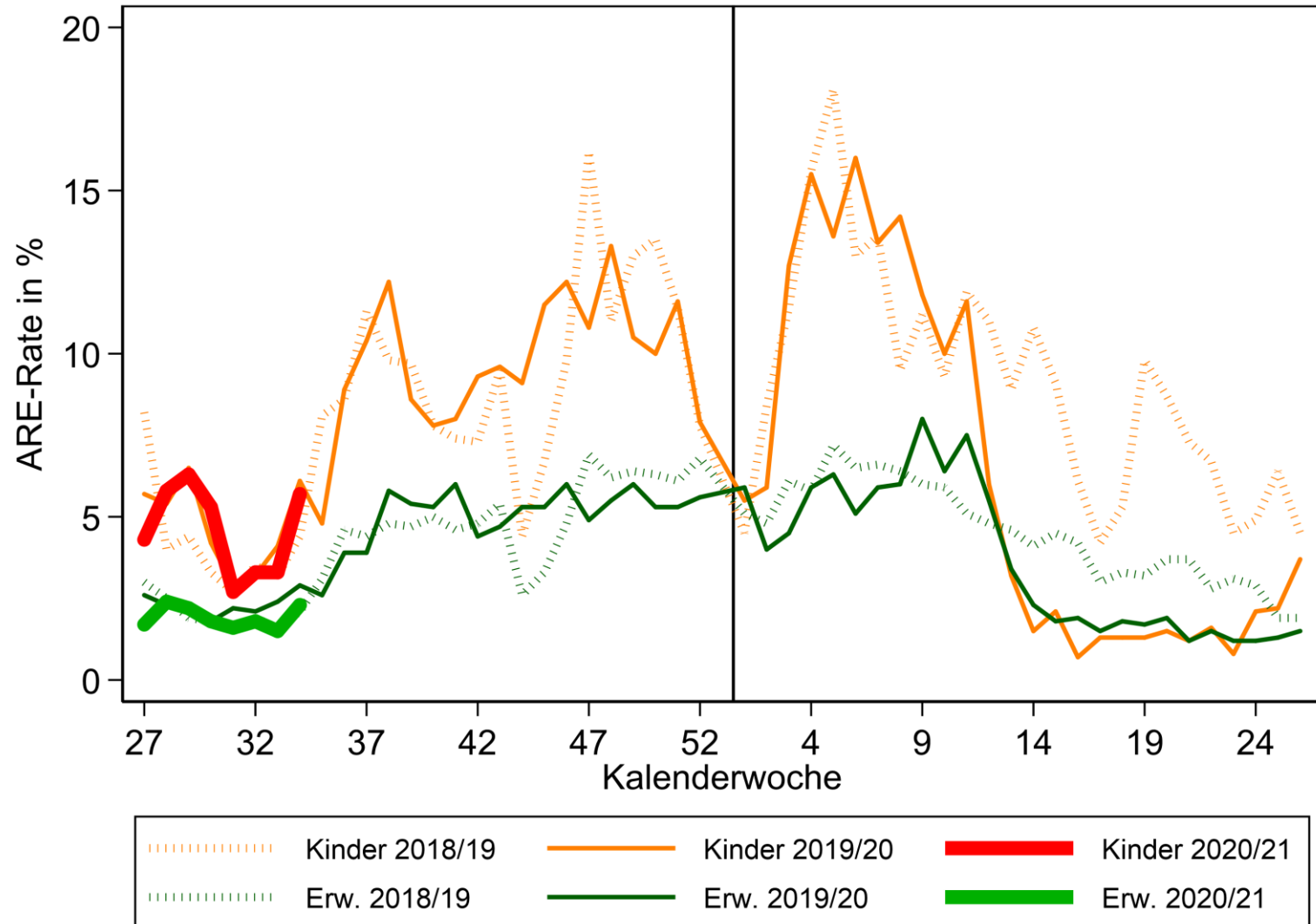


Ergebnisse der syndromischen Surveillance akuter Atemwegserkrankungen

GrippeWeb,
Arbeitsgemeinschaft Influenza,
ICOSARI
Datenstand 25.08.2020

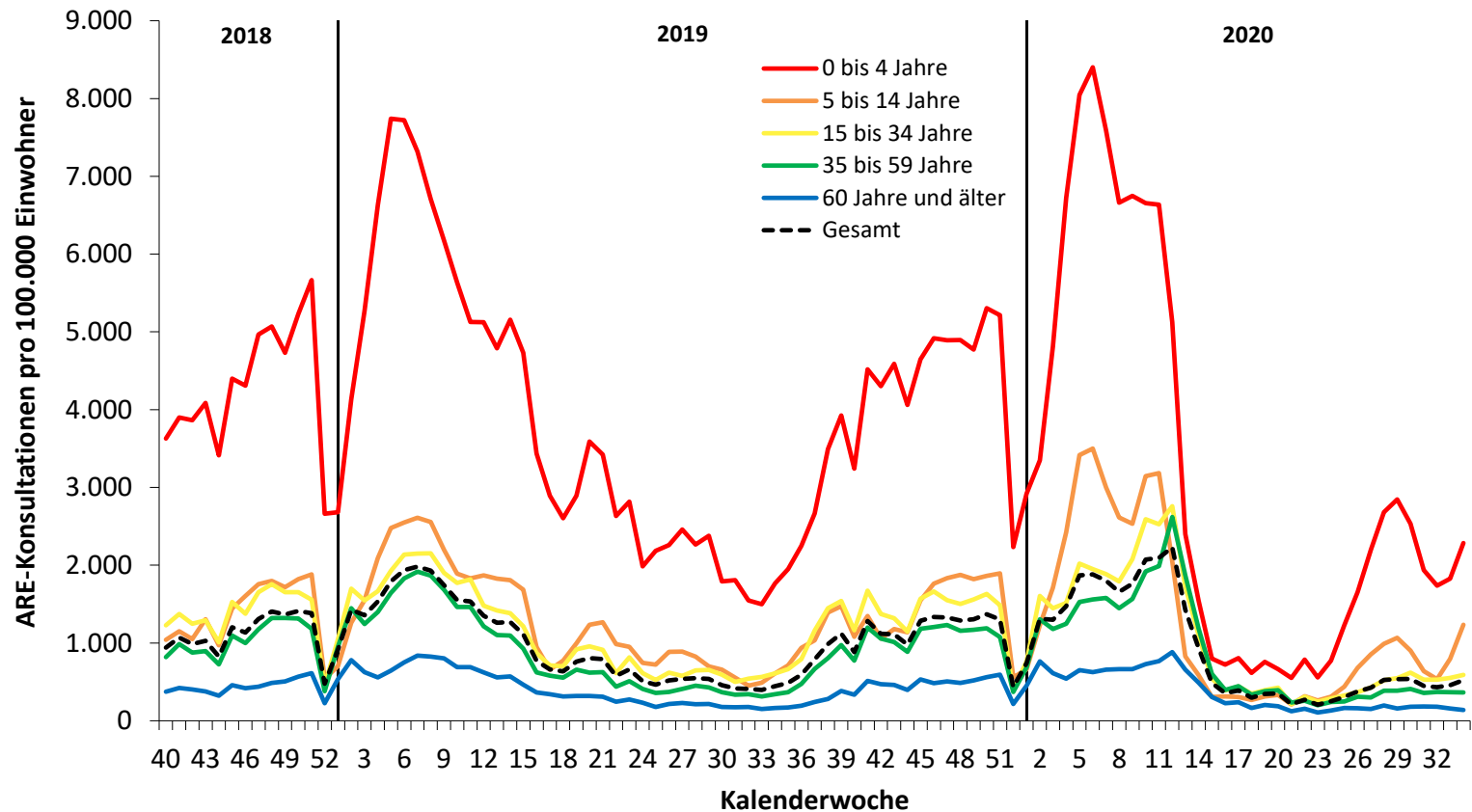


GrippeWeb bis zur 34. KW

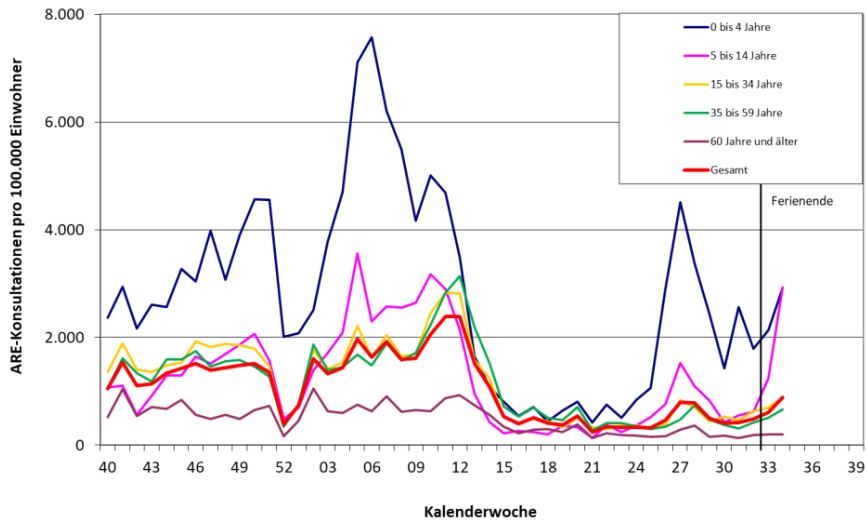




Arbeitsgemeinschaft Influenza - ARE-Konsultationen, bis zur 34. KW

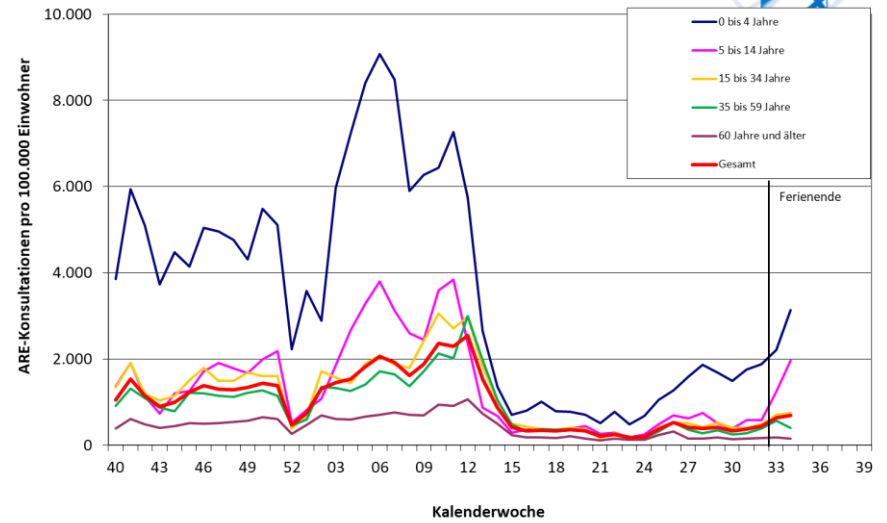


Konsultationsinzidenz in den Altersgruppen in Brandenburg/Berlin 2019/2020



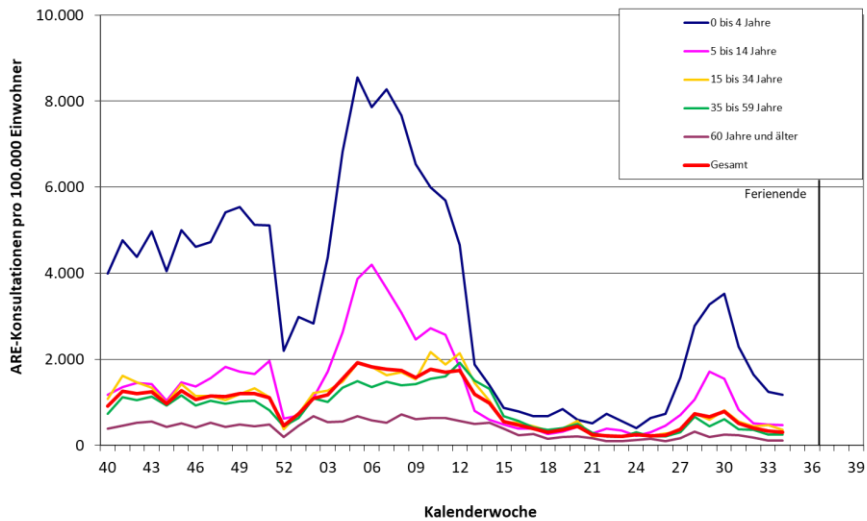
Berlin/Brandenburg

Konsultationsinzidenz in den Altersgruppen in Nordrhein-Westfalen 2019/2020



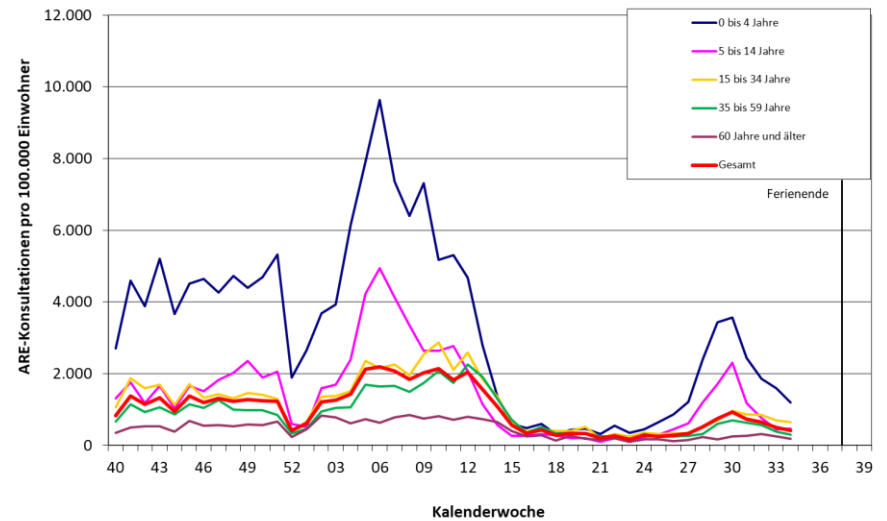
Nordrhein-Westfalen

Konsultationsinzidenz in den Altersgruppen in Bayern 2019/2020



Bayern

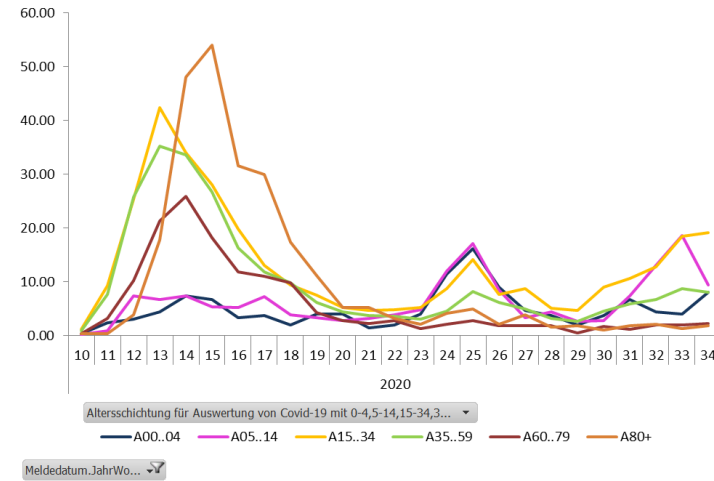
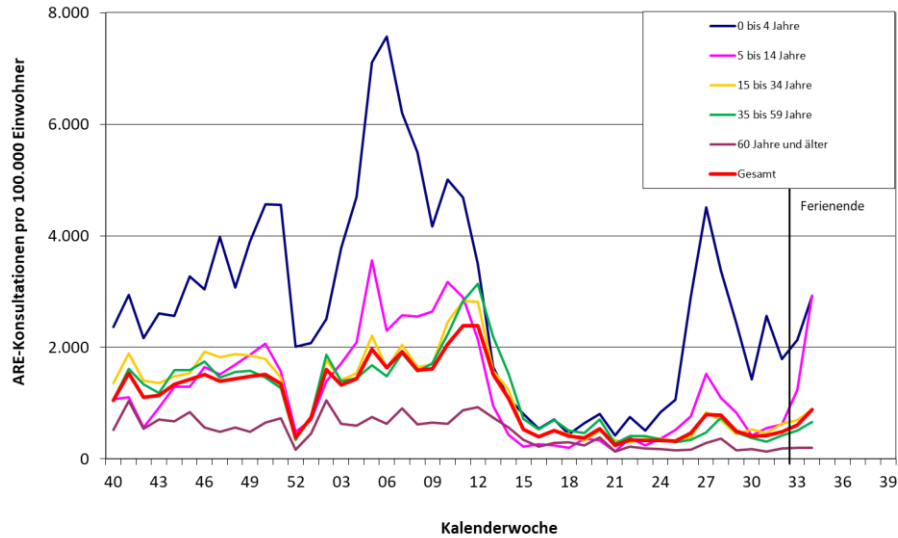
Konsultationsinzidenz in den Altersgruppen in Baden-Württemberg 2019/2020



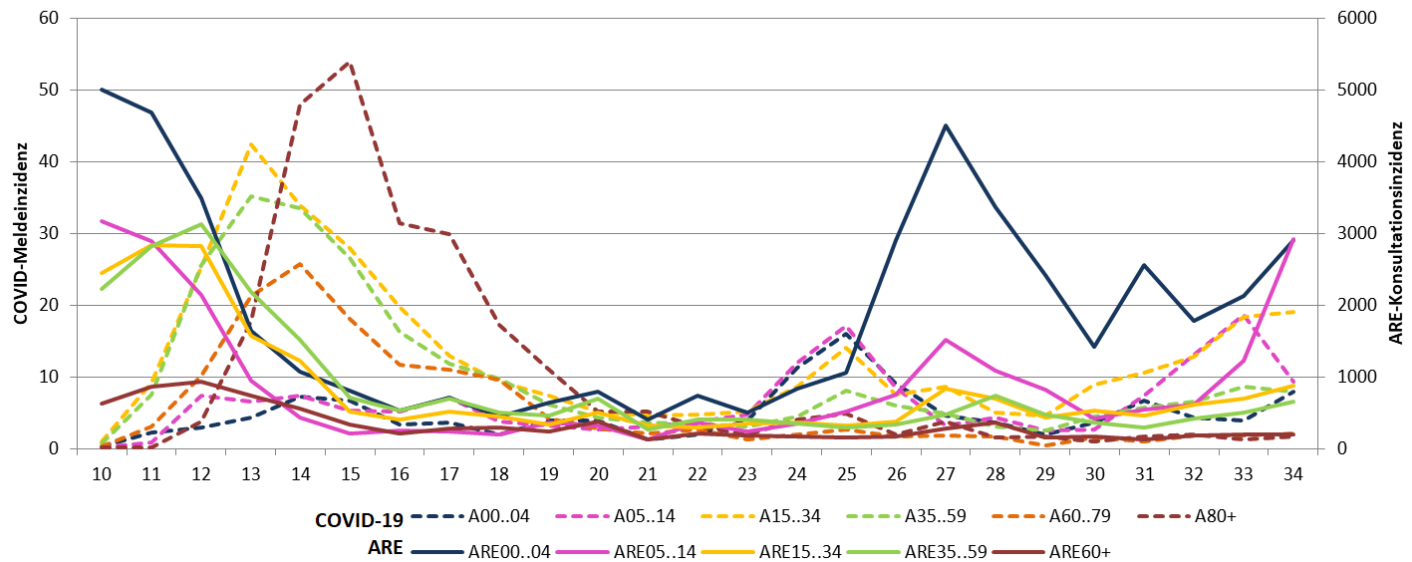
Baden-Württemberg



Konsultationsinzidenz in den Altersgruppen in Brandenburg/Berlin 2019/2020



COVID-Meldeinzidenz vs ARE-Konsultationsinzidenz





ICOSARI-KH-Surveillance – SARI-Fälle (J09 – J22) sowie Anteil SARI-Fälle mit COVID-Diagnose bis zur 33. KW

